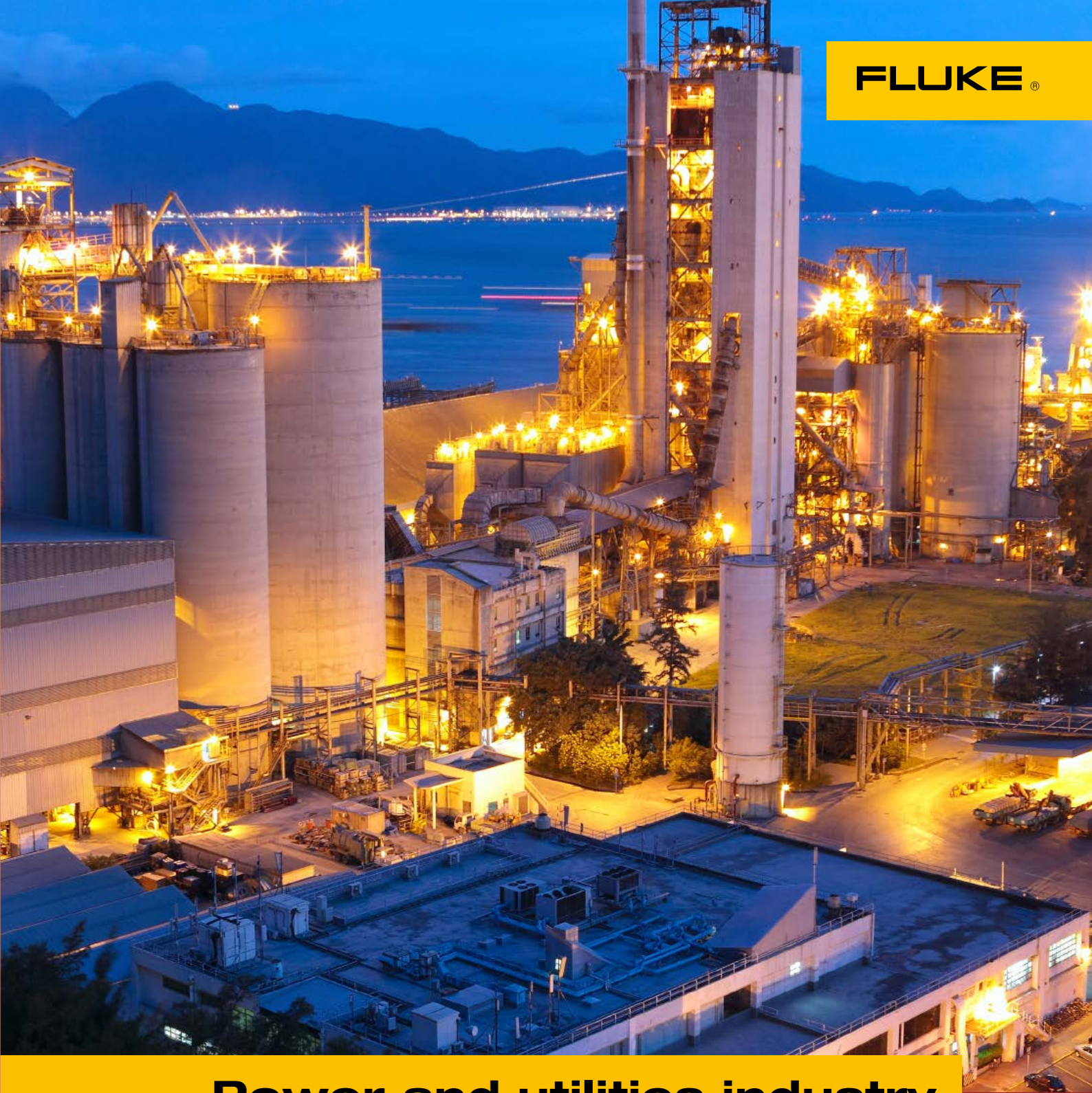


Recommended power generation solutions

Multifunction calibrators	Temperature calibrators	Pressure calibrators	mA loop valve tester
Best suited for: <ul style="list-style-type: none">• Troubleshooting and calibrating 4–20 mA loops, temperature, pressure and frequency input instruments in one tool• Document the performance of temperature and calibrate pressure switches and transmitters Power generation applications: <p>Measure, source, and simulate dc loop current pressures and temperatures to assist in meeting quality or minimizing measurement errors in custody transfer.</p> <p>Pressure and temperature transmitter calibration; calibration and configuration of HART devices; documenting field calibrations for recall and upload. Assist in documenting the performance of EPA or NRC regulated devices.</p>	Best suited for: <ul style="list-style-type: none">• Troubleshooting and calibrating temperature instrumentation• Testing temperature sensors• Measuring and sourcing thermocouples and RTD's, plus volts and ohms into control system I/O Power generation applications: <p>Measure thermocouples, ohms, and volts to test sensors and transmitters by sourcing/simulating thermocouples, RTDs, volts and ohms; executing remote tests with auto step and auto ramp; powering transmitters during test using loop power supply with simultaneous mA measurement; calibrating linear TC transmitter; calibrating thermal imagers and infrared thermometers.</p>	Best suited for: <ul style="list-style-type: none">• Calibration of pressure transmitters, gauges and switches• Maintenance of almost any pressure device using pressure sourcing and milliamp measurements• Calibrating pressure and I/P instruments with simultaneous pressure and current measurement Power generation applications: <p>Pressure measurements using internal sensor; measure mA while sourcing. Precise manual or automatic pressure control. Ensuring safety of pressure containment vessels.</p>	Best suited for: <ul style="list-style-type: none">• Smart control valve testing and verification• Condition maintenance of control valve Power generation applications: <p>Ensuring safety through maintaining optimal performance of the control valve through quick valve testing method via HART</p>
			Pressure gauges and comparison test pumps
			Best suited for: <ul style="list-style-type: none">• Calibrating pressure gauges Power generation applications: <p>Provides a known stable reference pressure of higher accuracy for detecting and correcting errors in the pressure measuring device being tested.</p>

More recommended power generation solutions

Baths and dry-wells	Precision thermometers and probes
Best suited for: <ul style="list-style-type: none">• Calibration of dial thermometers• Calibration of RTDs and thermocouples• RTD and thermocouple calibration check• Temperature controller loop calibration• Temperature transmitter and sensor combined calibration• Temperature switch test Power generation applications: <p>Provides a stable reference temperature for comparing temperature measuring equipment against a standard of higher accuracy to detect and correct errors in the device being tested. Used for testing components of control and monitoring systems.</p>	Best suited for: <ul style="list-style-type: none">• Contact temperature measurement in fluids• Contact temperature measurement in thermowells and test wells for in situ comparisons with controllers, displays, and gauges.• Use as an external reference thermometer to improve calibration accuracy• Logging temperatures Power generation applications: <p>Provides a more accurate reference temperature for checking and calibrating temperature measurement equipment. Use to detect errors in other instruments to simply to determine temperature precisely. Intrinsically safe models such as the 1551 Ex may be used in potentially explosive atmospheres.</p>



Power and utilities industry calibration solutions

The power and utilities industry is a demanding and diverse environment that requires reliable instruments that are both accurate and rugged. Whether you’re working in power generation, transmission, distribution, or installation, you need accurate tools that you can count on for the bench and the field.

With Process Calibration solutions from Fluke and Fluke Calibration for electrical, multifunction, mA loop, temperature, pressure and flow applications, you can find the right tools for the challenges you face every day.

Fluke. *Keeping your world up and running.*®

Fluke South East Asia Pte Ltd
1 Clementi Loop, #06-02/03/04, Singapore 129808

Tel: (65)6799-5575 | Fax: (65)6799-5577
Email: fsea.info@fluke.com
Web access: www.fluke.com.sg

©2023 Fluke Corporation. 3/2023
Specifications subject to change without notice.



Scan QR code to speak with a local Fluke specialist

Facility maintenance/ process technician

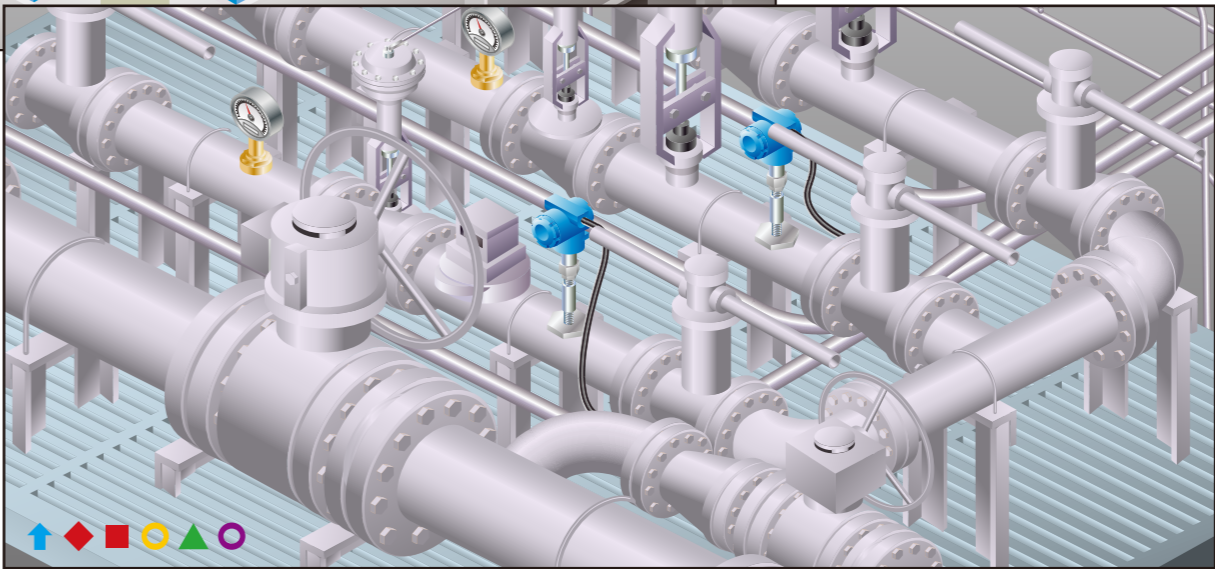
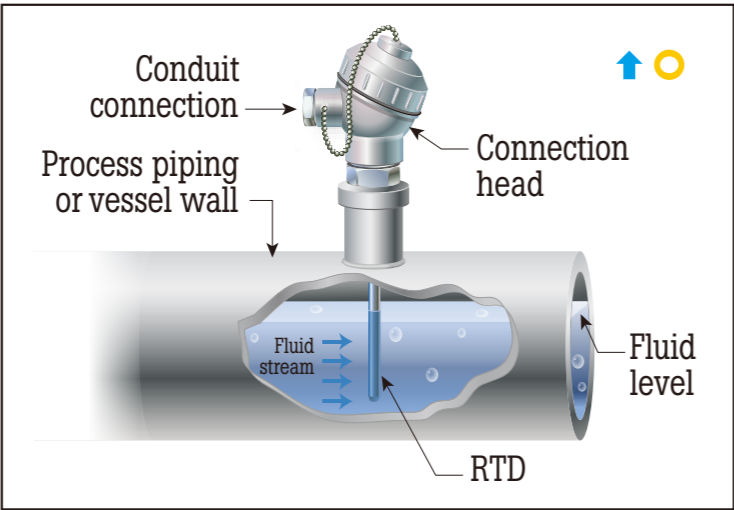
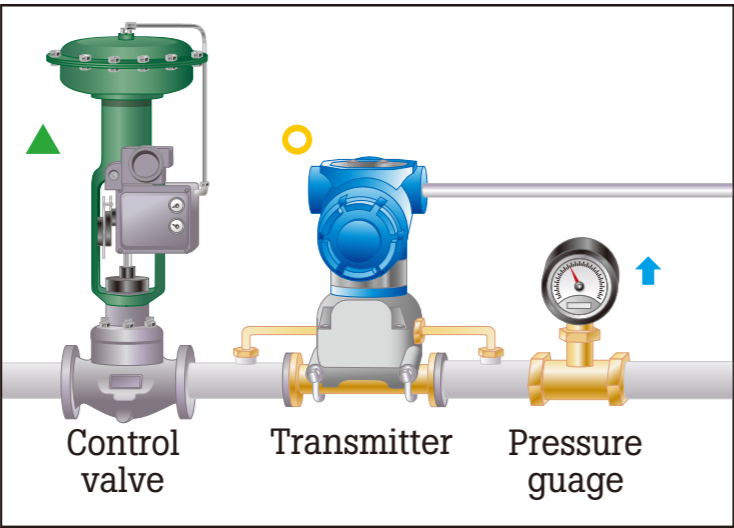
- Focus: power generation
- What issues do you face?
- Ensuring continuous and predictable uptime and downtime
 - Safety of personnel and the utility environment
 - Budget restrictions Troubleshooting process interruption with immediate response and repair

- Best suited for:
- Multifunction process calibrators
 - Pressure gauges and calibrators
 - Milliamp loop calibrator
 - Acoustic imager
 - Portable oscilloscopes
 - Earth ground tester
 - Thermal imager
 - Vibration tester
 - Alignment tool

Engineer

- Focus: process design and improvement
- What issues do you face?
- Specifying equipment to meet regulations and requirements
 - Preventing downtime

- Best suited for:
- Multifunction process calibrators
 - Pressure gauges and calibrators
 - Milliamp loop calibrator
 - Acoustic imager
 - Thermal imager
 - Portable oscilloscopes
 - Clamp meter
 - Multimeter



Instrument technician

- Focus: testing, maintenance and repair of equipment, instruments and systems
- What issues do you face?
- Downtime prevention
 - Safety systems testing
 - Troubleshooting process interruption with immediate response and repair
 - Leak rate testing

- Best suited for:
- Multifunction process calibrators
 - Pressure gauges and calibrators
 - Milliamp loop calibrator
 - Process test tools
 - Thermal imager
 - Clamp meter
 - Multimeter

Industrial calibration technician

- Focus: calibrating measurement devices
- What issues do you face?
- Making accurate measurements
 - Documenting procedures
 - Increasing throughput

- Best suited for:
- Multifunction process calibrators
 - Pressure gauges and calibrators
 - Milliamp loop calibrator
 - Baths and Dry-wells
 - Software

Fluke power generation solutions

Learn how Fluke solutions can save you time and money while increasing your productivity at www.fluke.com/petrochem.

Based on you. Built by Fluke.

Process calibration tools											Infrared and vibration tools			Acoustic Imager	Electrical Test tools				Software
Process test tools	Multifunction process calibrators			Pressure gauges and calibrators			mA loop valve tester	Baths and dry-wells (Temperature sensor calibration)			Infrared camera	Vibration tester	Belt Alignment tool	Leak detection	Portable oscilloscopes	Earth ground tester	Clamp meter	Digital multimeter	Software solutions
773 Milliamp Process Clamp Meter	726 Precision multifunction calibrator	754 Documenting Process Calibrator - HART	789 ProcessMeterTM with 250 Ohm HART resistor	729 PRO Automated Pressure Calibrator	700G Precision Pressure Gauge	721/721EX Dual sensor pressure calibrator	710 milliamp loop valve tester	7102 Micro-Bath Thermometer Calibrator	914X Field Metrology Wells	9103/9140 Dry-Well	Ti480 Pro	810 Vibration Analyzer	835 Laser Belt Alignment Tool	ii910 Precision Acoustic Imager	190 series III/MDA-550-III	1625-2 Earth Ground Tester	378 Clamp Meter	87V Max Digital Multimeter	750 SW DPC/TRACK2 Software

*Fluke Connect (FC) products only valid in selected countries.